

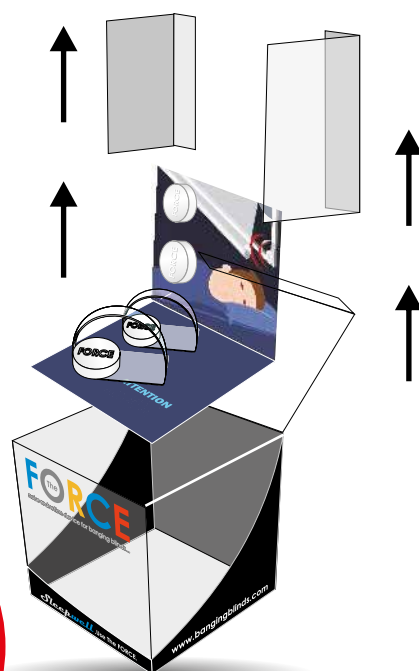
CAUTION !

DO NOT REMOVE MODULES FROM MAGNETIC TRAY AT THIS STAGE

The magnets are very powerful, it is important to follow these step by step instructions to avoid damaging the product.



1



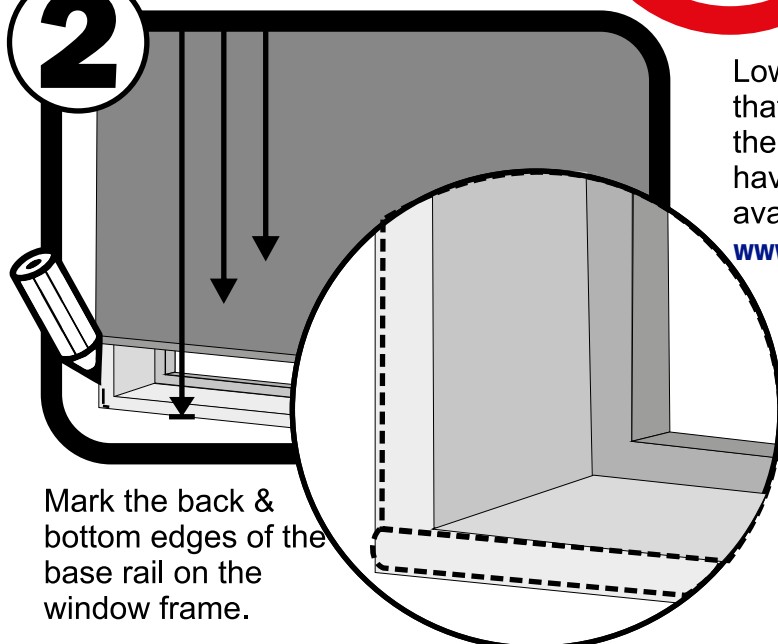
Remove the two clear base brackets and the magnetic tray from the box ensuring not to remove any modules from the tray. (clear base brackets are used for reveal installation not required for face installation)

IMPORTANT !

DO NOT press on the barrier this can damage the module



2

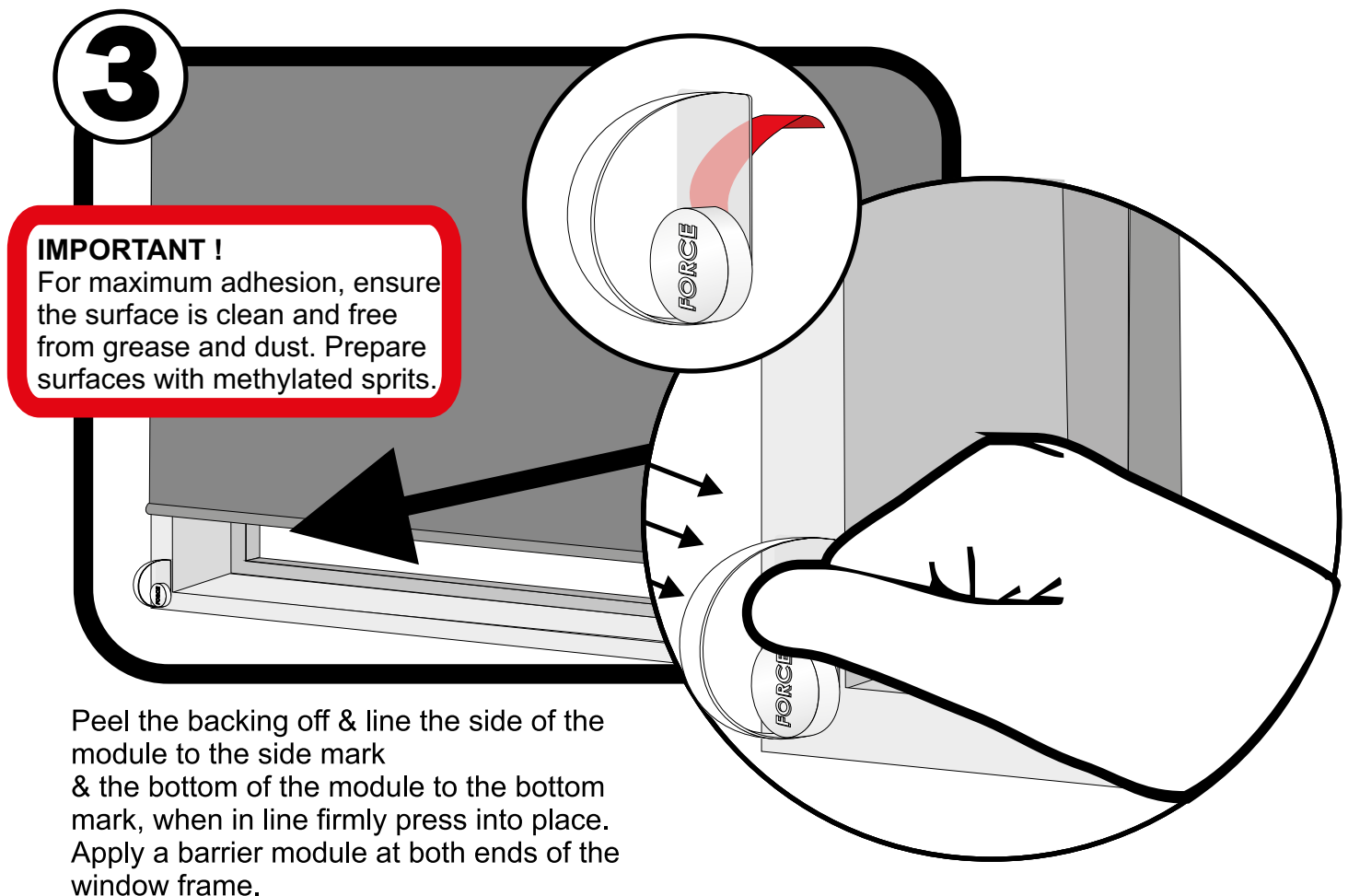


Mark the back & bottom edges of the base rail on the window frame.

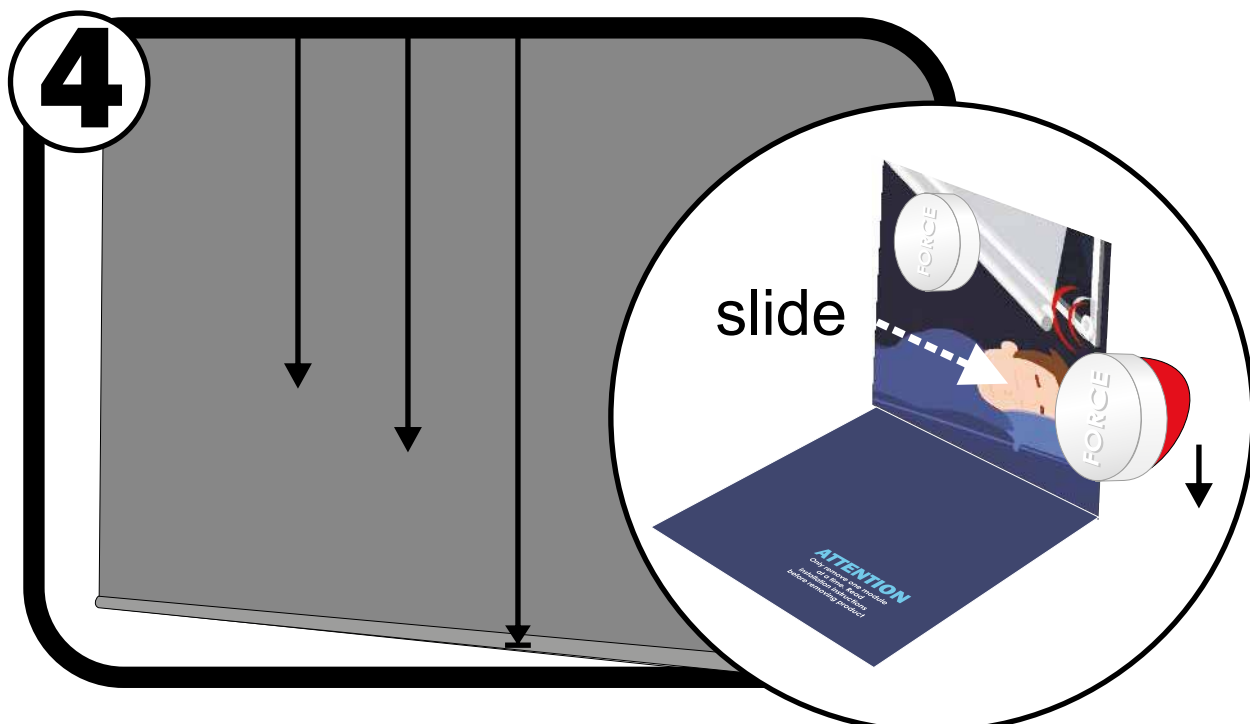
Lower the blind to its bottom limit. It is important that the blind has a stopper to ensure it stops at the same point every time. Your blinds should have been supplied with stoppers, if not they are available for purchase at www.blindsbyboronia.com.au



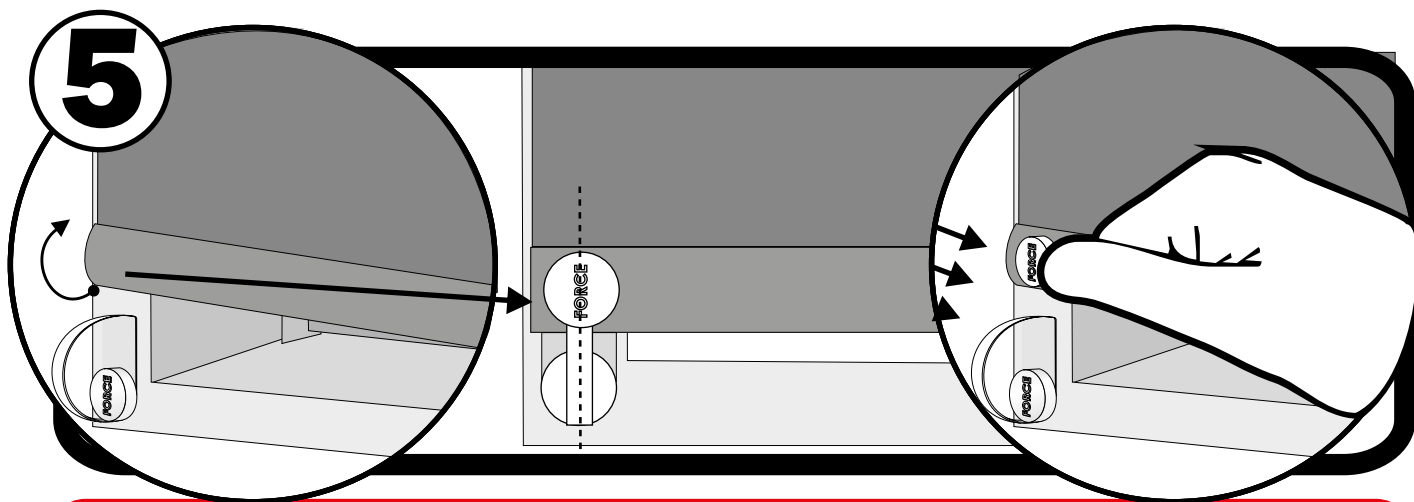
Slide **ONE** barrier module from the magnetic tray...



Step 4 shows how to place the base bar module on the back of the base bar. Lower the blind to its bottom limit.



Slide **ONE** base bar module from the magnetic tray... peel the backing off of the module

**IMPORTANT !**

For maximum adhesion, ensure the surface is clean and free from grease and dust. Prepare surfaces with methylated sprits.

Roll the base bar up half a turn so the back of the base bar is facing toward you. While holding the rolled up base rail, Aline the base bar module with the barrier module on the window face, when in line firmly press the module in place on the base rail. repeat this process at the other end of the blind. Congratulation, the FORCE is now installed.

*Live***well**, *Sleep***well** with The FORCE.

No more shoes or pillows jammed behind the blinds to deaden the sound of banging blinds ,sleep in silence, have fresh air circulating while still enjoying the function of the blind, privacy, room darkening or protection from the sun.



Blinds by **Boronia**

(02) 9838 1442 | info@blindsbb.net | www.blindsbyboronia.com.au